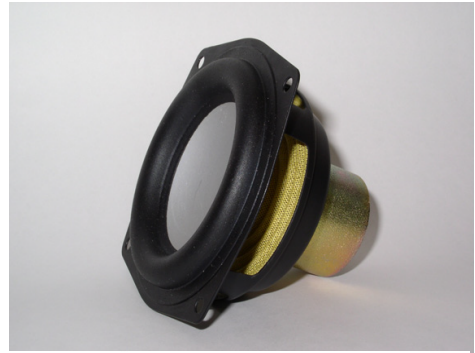
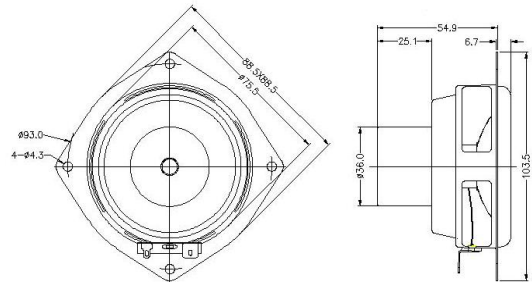


## 3 inch Woofer-Midrange

- **High Output**
- **Low Distortion**
- **Long Excursion**
- **No Stray Magnetic Fields**



Nominal Diameter . . . . . 3 inches (70 mm)  
 Nominal Impedance (Z) . . . . . 8 Ohms  
 Sensitivity, 1W/1m (E) . . . . . 80 dB @ 1 kHz  
 Power Capacity, RMS (Pe) . . . . . 20 W  
 Power Capacity, Peak . . . . . 80 W  
 Frequency Range (-10dB) . . . . . Fo - 15 kHz  
 Minimum Impedance . . . . . 8 ohms  
 Voice Coil Diameter . . . . . 19.3 mm  
 Voice Coil Winding Length (h) . . . . . 6.5 mm  
 Voice Coil Number of Layers (n) . . . . . 4  
 Voice Coil Former Material . . . . . Kapton  
 Voice Coil Wire Composition . . . . . CCAW  
 Magnetic Material . . . . . Neodymium radial  
 Stray Flux Shielding . . . . . Inherent  
 Magnetic Gap Depth (He) . . . . . 12.7 mm  
 Cone Material . . . . . Aluminum  
 Surround Material . . . . . Rubber  
 Polarity, Outward Motion . . . . . Positive voltage on (+) tab  
 Net Weight . . . . . 216 g  
 Maximum Excursion . . . . . 19 mm peak to peak



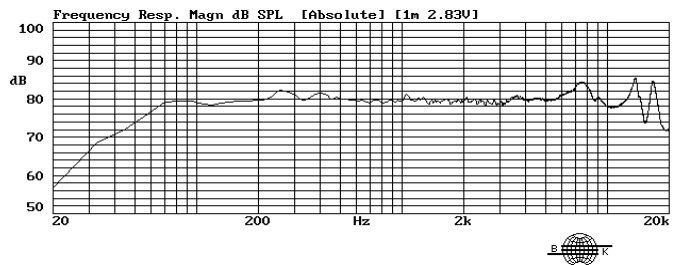
### Thiele / Small Parameters

Resonant Frequency (Fo) - Fs . . . . . 80 Hertz  
 Voice Coil DC Resistance - Re . . . . . 7.6 Ohms  
 Total Q - Qts . . . . . 0.67  
 Mechanical Q - Qms . . . . . 8.0  
 Electrical Q - Qes . . . . . 0.73  
 Equivalent Volume of Air - Vas . . . . . 1.25 L  
 Radiating Piston Area - Sd . . . . . 31 cm<sup>2</sup>  
 Xmax . . . . . 9.5 mm peak to peak

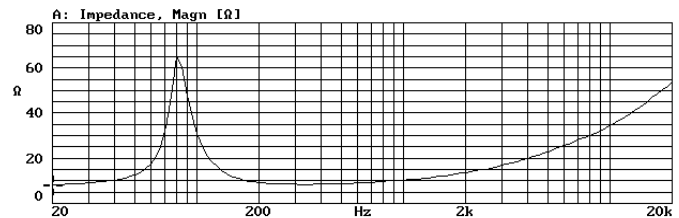
### Electrical / Mechanical Parameters

Flux Density x Length - BL . . . . . 4.7 Tesla-meters  
 Compliance - Cms . . . . . 920 μm/N  
 Total Mass - Mms . . . . . 4.3 grams

### Frequency Response (1W, 1m)



### Impedance



### Distortion (1W,1m)

